

SERRATA PTY LIMITED

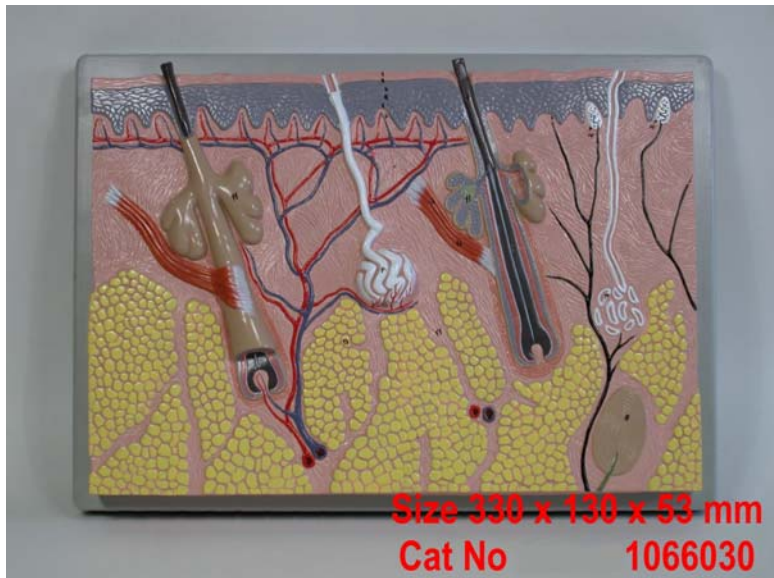
Incorporated in WA

Suppliers of Educational, Scientific Equipment & Permanent Magnets

P.O.Box 73, Galston NSW 2159
51 Cranstons Road, Dural NSW 2158, Australia
Tel: (+612) 9651 3033
Fax: (+612) 9651 2031

ACN 008 876 328
ABN 84 300 358 154
Web: www.serrata.com.au
Email: contact_us@serrata.com.au

Skin Models, 70 x Life-Size Cat No 1066030



Size 330 x 130 x 53 mm
Cat No 1066030

1. Stratum corneum
2. Stratum lucidum
3. Stratum granulosum
4. Stratum spinosum
5. Stratum basale
6. Papillary layer
7. Reticular layer
8. lamellated corpuscle, pacinians corpuscle
9. Hair
10. sweat gland
11. Sebaceous gland
12. Arrector pilorum muscle
13. Hypodermis
14. Tactile corpuscle