

SERRATA PTY LIMITED

Incorporated in WA

Suppliers of Educational, Scientific Equipment & Permanent Magnets

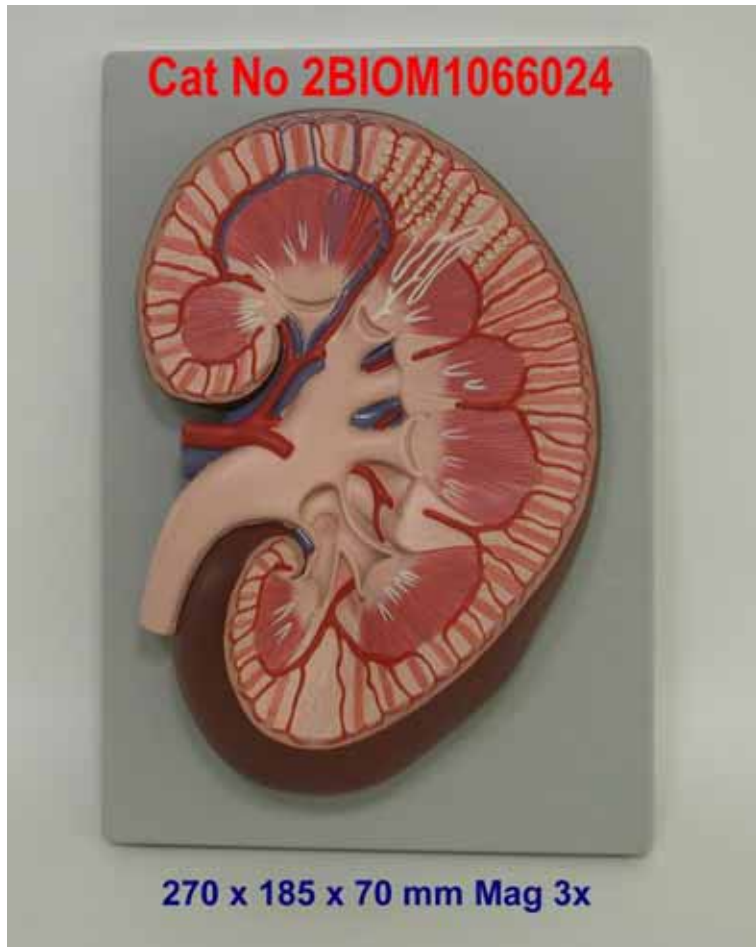
P.O.Box 73, Galston NSW 2159
51 Cranstons Road, Dural NSW 2158, Australia
Tel: (+612) 9651 3033
Fax: (+612) 9651 2031

ACN 008 876 328
ABN 84 300 358 154
Web: www.serrata.com.au
Email: contact_us@serrata.com.au

Kidney, 3x Enlarged

4 Parts

Cat No 1066024



1. Renal cartex
2. Renal column
3. Renal medulla
4. Renal pyramid
5. Renal papill
6. Minor renal calices
7. Major renal calices
8. Renal pelvis
9. Renal artery
10. Renal vein